


Scanner - EPSON WF-C5810 Series

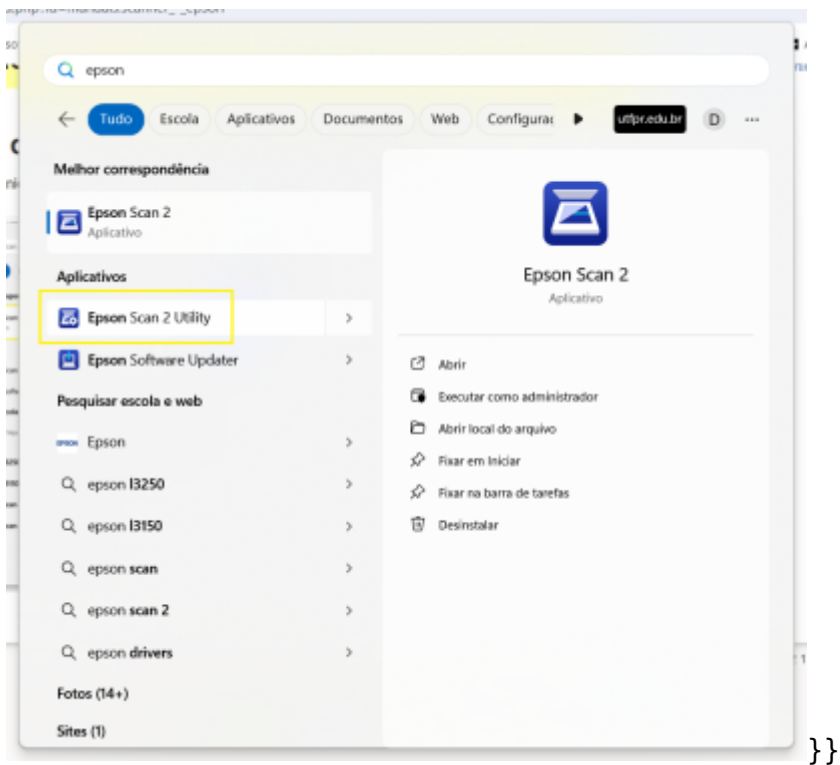
Windows

Para digitalizar a partir do computador:

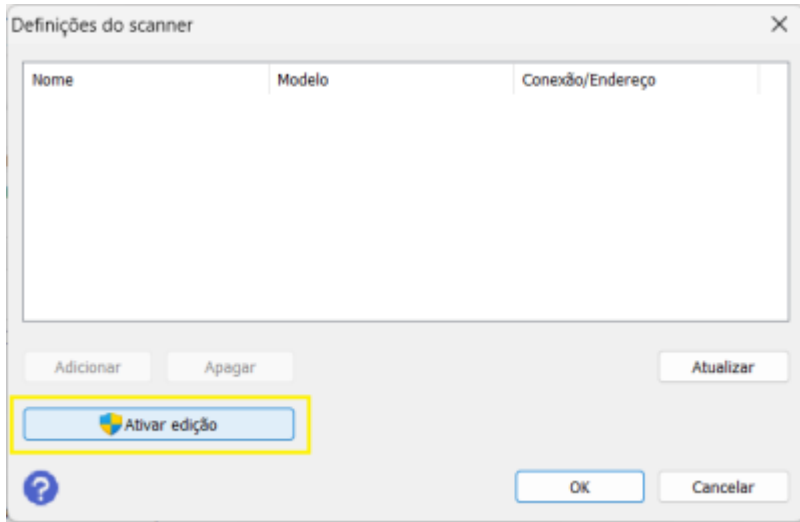
1. Adicionar scanner

 Adicionar Este passo é necessário somente no primeiro escaneamento

No menu Iniciar, digite “Epson” e clique na opção **Epson Scan 2 Utility**:



Na tela que se abre, clique em **Ativar edição**:



From: <https://wiki.pb.utfpr.edu.br/dokuwiki/> - **WIKI COGETI-PB**

Permanent link: https://wiki.pb.utfpr.edu.br/dokuwiki/doku.php?id=manuais:scanner_-_epson&rev=1737553616

Last update: **2025/01/22 10:46**

